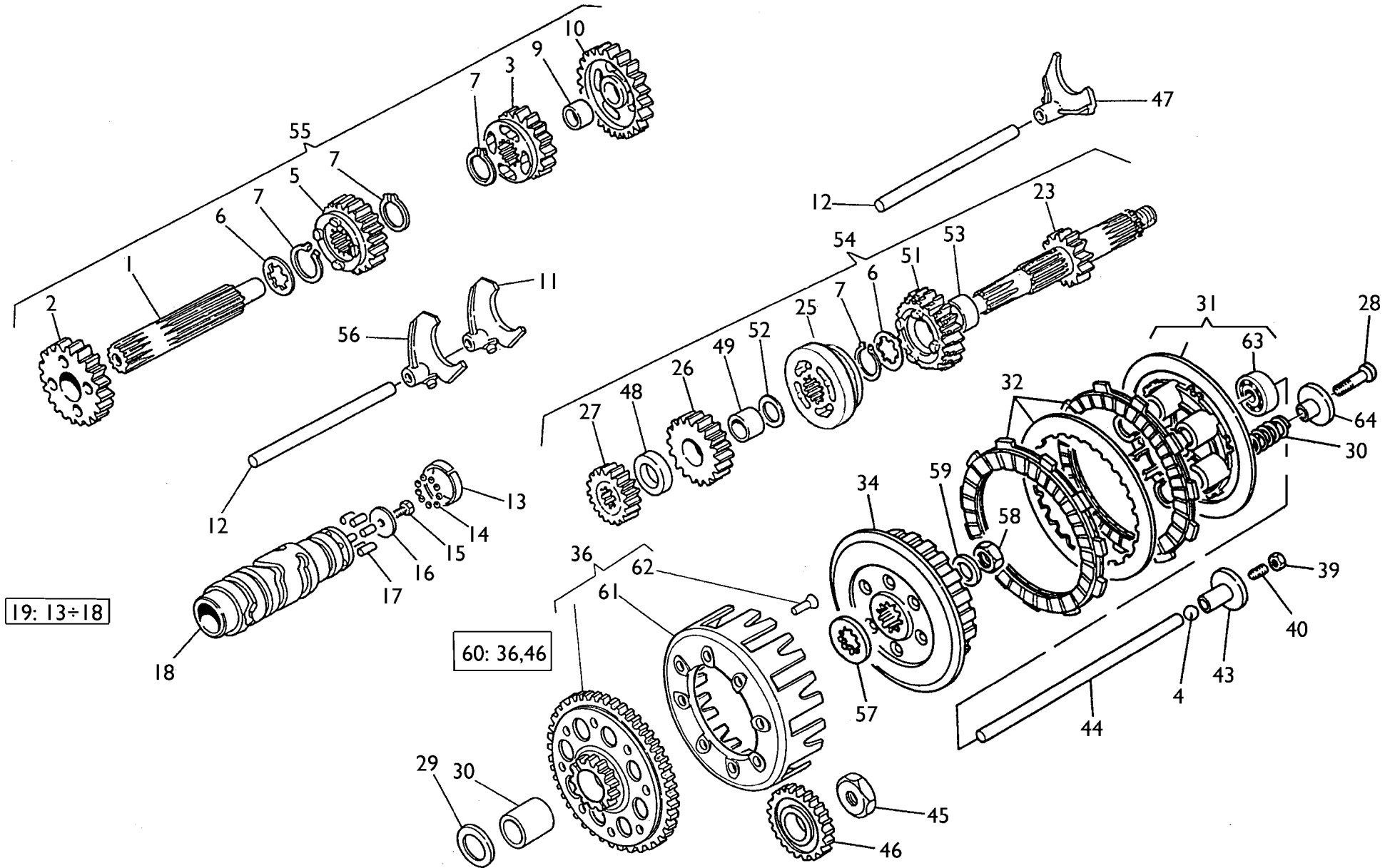


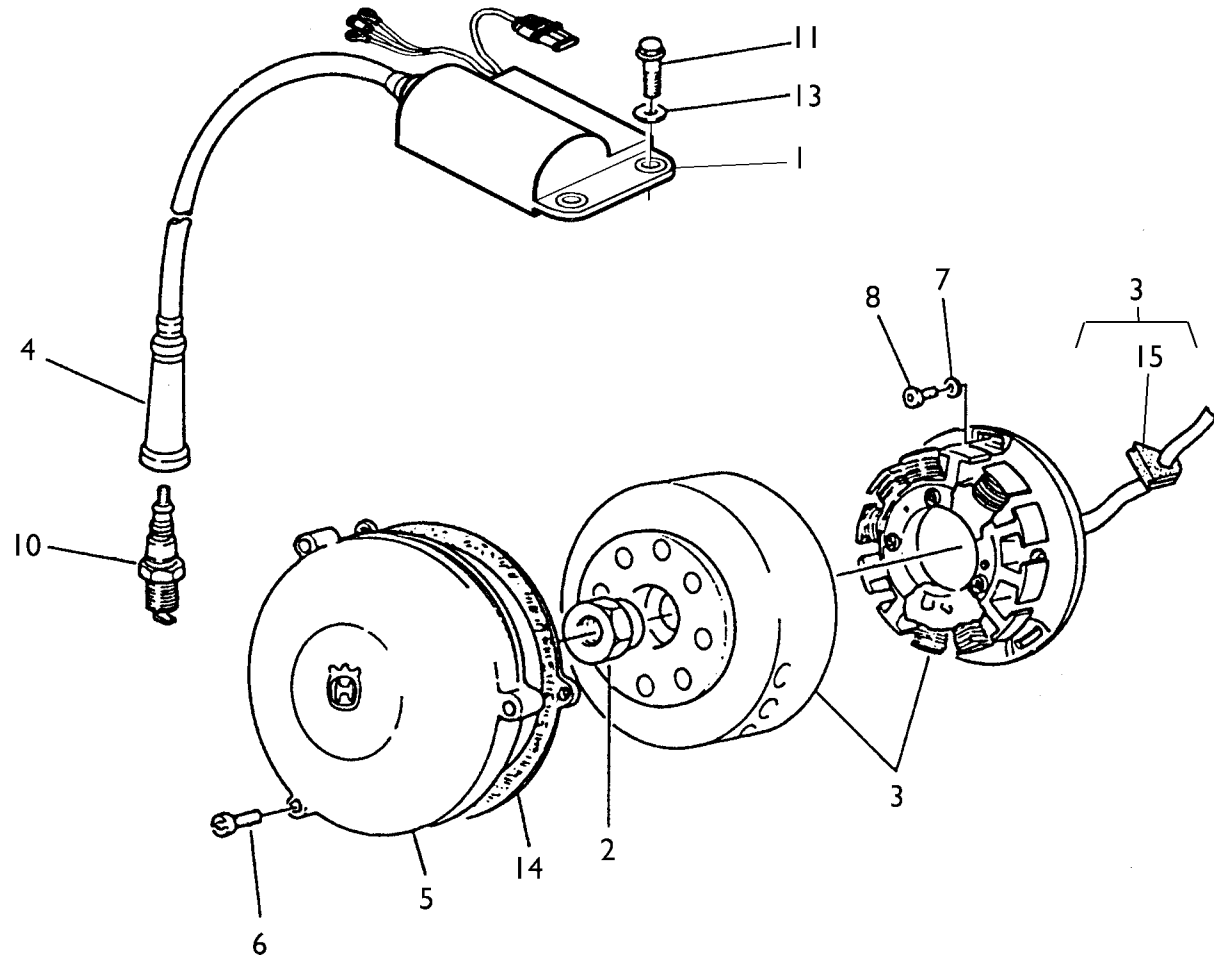
| Note<br>Notes<br>Mark<br>Notas | Pos.<br>No.<br>Index<br>Pos. | N. Cod.<br>Code No.<br>Nr. Code<br>Code Nr<br>N. Cod. | Q.tà<br>Q.ty<br>Q.te<br>M.ge<br>C.ad | DENOMINAZIONE                           | NAME                               | DESIGNATION                           | BESHREIBUNG                               | DENOMINACION                            | Validità<br>Validity<br>Validité<br>Gultig<br>Validez |
|--------------------------------|------------------------------|---|--------------------------------------|---|------------------------------------|---------------------------------------|---|---|---|
|                                | 1                            | 8000 60526  | 1                                    | Albero secondario                       | Layshaft                           | Arbre secondaire                      | Vorgelegewelle                            | Eje secundario                          |   |
|                                | 2                            | 1616 02201  | 1                                    | Ingranaggio 2 <sup>a</sup> A.S. (Z=26)  | Secondary shaft 2nd gear<br>(Z=26) | Engrenage 2ème vitesse A.S.<br>(Z=26) | Zah. f. 2. Geschw.<br>Vorgelegew. (Z=26)  | Engranaje 2° velocidad Eje S.<br>(Z=26) |   |
|                                | 3                            | 8000 80861  | 1                                    | Ingranaggio 4 <sup>a</sup> A.S. (Z=24)  | Secondary shaft 4th gear<br>(Z=24) | Engrenage 4ème vitesse A.S.<br>(Z=24) | Zah. f. 4. Geschw.<br>Vorgelegew. (Z=24)  | Engranaje 4° velocidad Eje S.<br>(Z=24) |   |
|                                | 4                            | 6BN0 21509  | 1                                    | Sfera                                   | Ball                               | Bille                                 | Kugel                                     | Esfera                                  |   |
|                                | 5                            | 8000 80860  | 1                                    | Ingranaggio 3 <sup>a</sup> A.S. (Z=24)  | Secondary shaft 3rd gear<br>(Z=24) | Engrenage 3ème vitesse A.S.<br>(Z=24) | Zah. f. 3. Geschw.<br>Vorgelegew. (Z=24)  | Engranaje 3° velocidad Eje S.<br>(Z=24) |   |
|                                | 6                            | 1611 71701  | 2                                    | Rosetta                                 | Washer                             | Rondelle                              | Scheibe                                   | Arandela                                |   |
|                                | 7                            | 66N0 21211  | 4                                    | Anello di fermo                         | Stop ring                          | Bague d'arrêt                         | Haltering                                 | Anillo de retención                     |   |
|                                | 9                            | 1612 41501  | 1                                    | Bussola                                 | Bushing                            | Douille                               | Buchse                                    | Manguito                                |   |
|                                | 10                           | 8000 82213  | 1                                    | Ingranaggio 1 <sup>a</sup> A.S. (Z=28)  | Gear 1st speed (Z=28)              | Engrenage 1ère (Z=28)                 | Zahnrad 1. Gang (Z=28)                    | Engranaje 1° velocid. (Z=28)            |   |
|                                | 11                           | 1612 38401  | 1                                    | Forcella cambio                         | Fork                               | Fourche                               | Gabel                                     | Horquilla                               |   |
|                                | 12                           | 1611 69901  | 2                                    | Perno                                   | Pin                                | Pivot                                 | Bolzen                                    | Perno                                   |   |
|                                | 13                           | 1612 69901  | 1                                    | Anello esterno                          | Ring                               | Bague                                 | Ring                                      | Anillo                                  |   |
|                                | 14                           | 8000 60472  | 11                                   | Sfera                                   | Ball                               | Bille                                 | Kugel                                     | Esfera                                  |   |
|                                | 15                           | 8000 60473  | 1                                    | Vite                                    | Screw                              | Vis                                   | Schraube                                  | Tornillo                                |   |
|                                | 16                           | 8000 30326  | 1                                    | Rosetta                                 | Washer                             | Rondelle                              | Scheibe                                   | Arandela                                |   |
|                                | 17                           | 8000 35823  | 6                                    | Rullino                                 | Roller                             | Aiguille                              | Rolle                                     | Rodillo                                 |   |
|                                | 19                           | 8000 87566  | 1                                    | Albero forcelle cambio compl.           | Driving shaft gearbox forks        | Arbre comm. fourches trans.           | Antriebswelle Schaltgabel                 | Eje mando horquilla cambio              |   |
|                                | 20                           | 8E00 30053  | 1                                    | Rosetta di rasamento                    | Washer                             | Rondelle                              | Scheibe                                   | Arandela                                |   |
|                                | 22                           | 1615 38801  | 1                                    | Bussola                                 | Bushing                            | Douille                               | Buchse                                    | Manguito                                |   |
|                                | 23                           | 8000 82212  | 1                                    | Albero primario (Z=17)                  | Main shaft (Z=17)                  | Arbre primaire (Z=17)                 | Hauptwelle (Z=17)                         | Eje primario (Z=17)                     |   |
|                                | 25                           | 8000 80854  | 1                                    | Distanziale innesto 3 <sup>a</sup> A.P. | Spacer 3th speed                   | Entretoise 3ème                       | Distanzstück 3. Gang                      | Separador 3° velocidad                  |   |
|                                | 26                           | 8000 80855  | 1                                    | Ingranaggio 3 <sup>a</sup> A.P. (Z=21)  | Main shaft 3rd gear (Z=21)         | Engrenage 3ème vitesse A.P.<br>(Z=21) | Zahnw. f. 3. Geschw.<br>Antriebsw. (Z=21) | Engranaje 3° velocidad Eje P.<br>(Z=21) |   |
|                                | 27                           | 1616 01701  | 1                                    | Ingranaggio 2 <sup>a</sup> A.P. (Z=19)  | Main shaft 2nd gear (Z=19)         | Engrenage 2ème vitesse A.P.<br>(Z=19) | Zahnw. f. 2. Geschw.<br>Antriebsw. (Z=19) | Engranaje 2° velocidad Eje P.<br>(Z=19) |   |
|                                | 28                           | 60NI 07335  | 6                                    | Vite                                    | Screw                              | Vis                                   | Schraube                                  | Tornillo                                |   |
|                                | 30                           | 8000 96888  | 6                                    | Molla frizione                          | Clutch spring                      | Ressort embrayage                     | Kupplungsfeder                            | Resorte embrague                        |   |



19: 13÷18

60: 36,46

| Note<br>Notes<br>Notas | Pos.<br>No.<br>Index | N. Cod.<br>Code No.<br>Nr. Code<br>Code Nr<br>N. Cod. | Q.tà<br>Q.ty<br>Q.te<br>M.ge<br>C.ad | DENOMINAZIONE                               | NAME                       | DESIGNATION                                       | BESHREIBUNG                               | DENOMINACION  | Validità<br>Validity<br>Validité<br>Gultig<br>Validez |
|------------------------|----------------------|---|--------------------------------------|---|----------------------------|---|---|---|---|
|                        | 31                   | 8000 48138  | 1                                    | Piastra spingidischi                        | Plate                      | Plaque  | Platte                                    | Placa   |   |
|                        | 32                   | 8A00 88966  | 1                                    | Ass. gruppo frizione                        | Clutch group assy          | Groupe embrayage compl.                           | Kupplungsgruppe Kpl                       | Grupo embrague compl.                               |   |
|                        | 34                   | 8A00 96746  | 1                                    | Mozzo frizione                              | Hub                        | Moyeau  | Radnabe                                   | Cubo  |   |
|                        | 36                   | 8000 69722  | 1                                    | Campana frizione completo                   | Clutch housing compl.      | Cage embrayage compl.                             | Kupplungskorb kpl.                        | Campana embrague compl.                             |   |
|                        | 39                   | 61NI 15062  | 1                                    | Dado  | Nut                        | Ecrou   | Mutter                                    | Tuerca  |   |
|                        | 40                   | 8000 54692  | 1                                    | Vite  | Screw                      | Vis   | Schraube                                  | Tornillo  |   |
|                        | 43                   | 8000 96754  | 1                                    | Piattello                                   | Plate                      | Plateau   | Teller                                    | Placa   |   |
|                        | 44                   | 1615 31502  | 1                                    | Asta di forza                               | Fork tube                  | Barre de force                                    | Druckstab                                 | Varilla de fuerza                                   |   |
|                        | 45                   | 8000 59965  | 1                                    | Dado  | Nut                        | Ecrou   | Mutter                                    | Tuerca  |   |
|                        | 46                   | 8000 69715  | 1                                    | Ingranaggio conduttore                      | Driving gear               | Engranaage conducteur                             | Zahnrad                                   | Engranaje conductor                                 |   |
|                        | 47                   | 1616 01501  | 1                                    | Forcella cambio                             | Fork                       | Fourche   | Gabel                                     | Horquilla   |   |
|                        | 48                   | 1616 02701  | 1                                    | Distanziale                                 | Spacer                     | Entretoise  | Distanzstück                              | Separador   |   |
|                        | 49                   | 1616 36001  | 1                                    | Bussola                                     | Bushing                    | Douille   | Buchse                                    | Manguito  |   |
|                        | 51                   | 8000 80856  | 1                                    | Ingranaggio 4 <sup>a</sup> A.P. (Z=24)      | Main shaft 4th gear (Z=24) | Engrenage 4 <sup>ème</sup> vitesse A.P.<br>(Z=24) | Zahnw. f. 4. Geschw. Antriebsw.<br>(Z=24) | Engranaje 4 <sup>º</sup> velocidad Eje P.<br>(Z=24) |   |
|                        | 52                   | 1612 84201  | 1                                    | Rosetta                                     | Washer                     | Rondelle  | Scheibe                                   | Arandela  |   |
|                        | 53                   | 8000 63798  | 1                                    | Bussola                                     | Bushing                    | Douille   | Buchse                                    | Manguito  |   |
|                        | 54                   | 8000 87251  | 1                                    | Albero primario completo                    | Main shaft                 | Arbre primaire                                    | Hauptwelle                                | Eje principal completo                              |   |
|                        | 55                   | 8000 87250  | 1                                    | Albero secondario completo                  | Layshaft compl.            | Arbre secondaire compl.                           | Vorgelegewelle kpl.                       | Eje secundario completo compl.                      |   |
|                        | 56                   | 8000 63425  | 1                                    | Forcella 3 <sup>a</sup> vel. sul secondario | Fork                       | Fourche   | Gabel                                     | Horquilla   |   |
|                        | 57                   | 8A00 38350  | 1                                    | Rosetta                                     | Washer                     | Rondelle  | Scheibe                                   | Arandela  |   |
|                        | 58                   | 8000 36856  | 1                                    | Dado  | Nut                        | Ecrou   | Mutter                                    | Tuerca  |   |
|                        | 59                   | 8000 36857  | 1                                    | Rosetta di sicurezza                        | Washer                     | Rondelle  | Scheibe                                   | Arandela  |   |
|                        | 60                   | 8000 69729  | 1                                    | Coppia ingran. trasm. primaria              | Set of matched primary     | Engrenages trans. prim.                           | Stirnraderpaar                            | Copla engranaje trans. primaria                     |   |
|                        | 61                   | 8000 69723  | 1                                    | Campana frizione                            | Clutch housing             | Cage embrayage                                    | Kupplungskorb                             | Campana embrague                                    |   |
|                        | 62                   | 63N0 16374  | 8                                    | Ribattino                                   | Rivet                      | Rivet   | Niet                                      | Remache   |   |
|                        | 63                   | 8000 34317  | 1                                    | Cuscinetto (ø12xØ28x8 mm)                   | Bearing (ø12xØ28x8 mm)     | Roulement (ø12xØ28x8 mm)                          | Lager (ø12xØ28x8 mm)                      | Cojinete (ø12xØ28x8 mm)                             |   |
|                        | 64                   | 8000 81519  | 1                                    | Scodellino                                  | Cup                        | Cuvette   | Teller                                    | Cubeta  |   |





TE, TC 570-  
SM 570 RI/ 2002

TAVOLA  
DRAWING  
TABLE  
BILD  
TABLA

9

ACCENSIONE - IGNITION  
ALLUMAGE - ZUNDUNG  
ENCENDIDO

| Note<br>Notes<br>Mark<br>Notas | Pos.<br>No.<br>Index<br>Pos. | N. Cod.<br>Code No.<br>Nr. Code<br>Code Nr<br>N. Cod. | Q.tà<br>Q.ty<br>M.ge<br>C.ad | DENOMINAZIONE        | NAME              | DESIGNATION        | BESHREIBUNG        | DENOMINACION      | Validità<br>Validity<br>Validité<br>Gultig<br>Validez |
|--------------------------------|------------------------------|---|------------------------------|----------------------|-------------------|--------------------|--------------------|-------------------|---|
|                                | 1                            | 8000 94008  | 1                            | Bobina completa      | Coil compl.       | Bobine compl.      | Zündspule kpl.     | Bobina compl.     |   |
|                                | 2                            | 8A00 59964  | 1                            | Dado                 | Nut               | Ecrou              | Mutter             | Tuerca            |   |
|                                | 3                            | 8000 77391  | 1                            | Alternatore compl.   | Alternator compl. | Alternateur compl. | Lichtmaschine kpl. | Alternador compl. |   |
|                                | 4                            | 8000 A0129  | 1                            | Cappuccio candela    | Cap               | Capuchon           | Kappe              | Capuchón          |   |
|                                | 5                            | 80D0 60559  | 1                            | Coperchio accensione | Cover             | Couvercle          | Deckel             | Tapa              |   |
|                                | 6                            | 60NI 02513  | 3                            | Vite                 | Screw             | Vis                | Schraube           | Tornillo          |   |
|                                | 7                            | 8000 85322  | 3                            | Rosetta              | Washer            | Rondelle           | Scheibe            | Arandela          |   |
|                                | 8                            | 60NI 02487  | 3                            | Vite                 | Screw             | Vis                | Schraube           | Tornillo          |   |
|                                | 10                           | 1615 38302  | 1                            | Candela NGK          | Spark plug        | Bougie             | Zündkerze          | Bujía             |   |
| <b>A</b>                       | 10                           | 8000 77478  | 1                            | Candela CHAMPION     | Spark plug        | Bougie             | Zündkerze          | Bujía             |   |
|                                | 11                           | 8C00 67997  | 2                            | Vite                 | Screw             | Vis                | Schraube           | Tornillo          |   |
|                                | 13                           | 62N4 15548  | 2                            | Rosetta              | Washer            | Rondelle           | Scheibe            | Arandela          |   |
|                                | 14                           | 1615 27501  | 1                            | Guarnizione          | Gasket            | Garnitue           | Dichtung           | Junta             |   |
|                                | 15                           | 1614 72801  | 1                            | Gommino              | Gasket            | Garnitue           | Dichtung           | Junta             |   |

